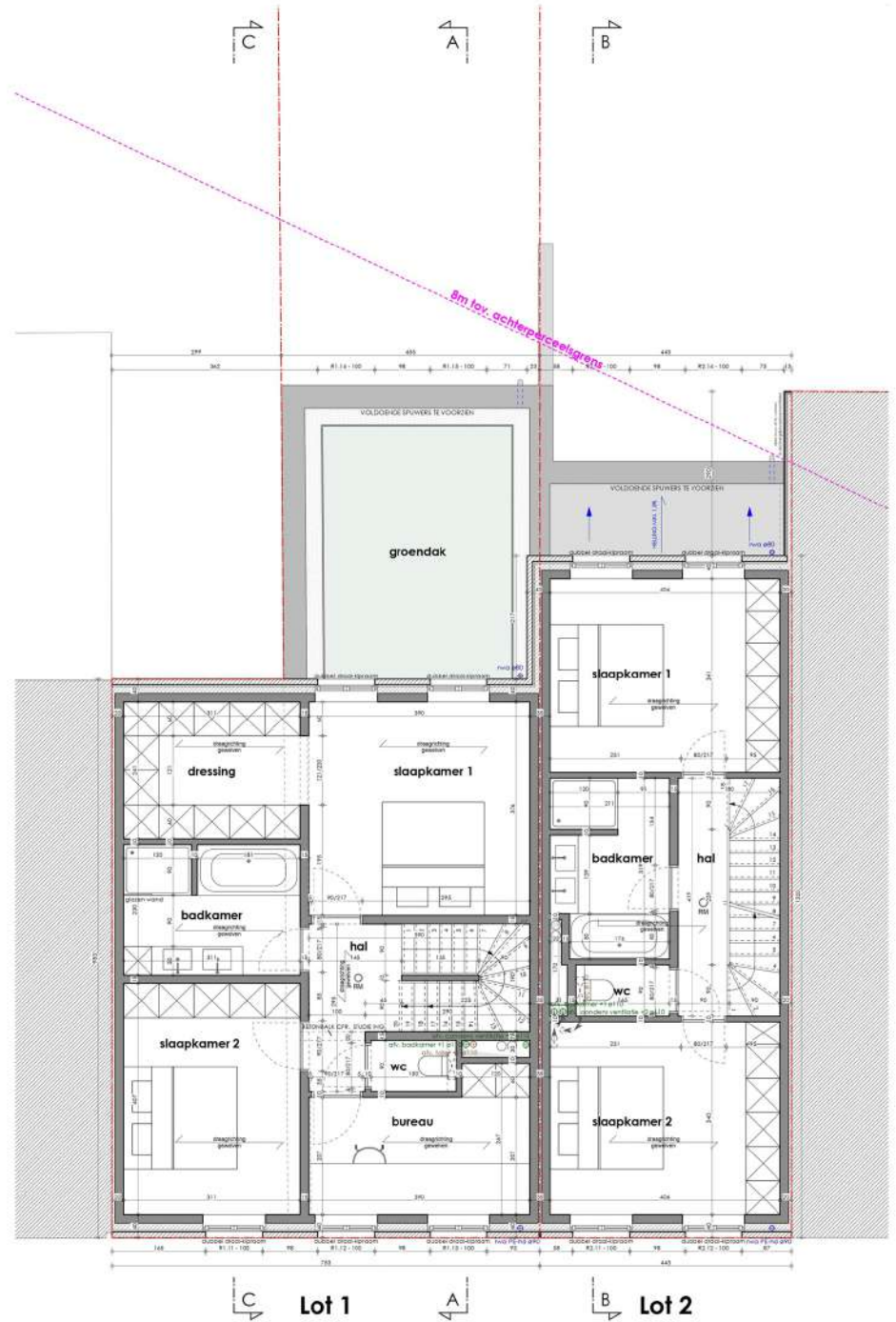


### NT GELIJKVLOERS

Schaal 1:50

Totale Opp: 197.70 m<sup>2</sup>  
 gelijkvloers = 67.43 m<sup>2</sup>  
 verdieping +1 = 74.52 m<sup>2</sup>  
 verdieping +2 = 55.75 m<sup>2</sup>

Totale Opp: 147.61 m<sup>2</sup>  
 gelijkvloers = 61.60 m<sup>2</sup>  
 verdieping +1 = 53.55 m<sup>2</sup>  
 verdieping +2 = 32.46 m<sup>2</sup>



### NT VERDIEPING +1

Schaal 1:50

Totale Opp: 197.70 m<sup>2</sup>  
 gelijkvloers = 67.43 m<sup>2</sup>  
 verdieping +1 = 74.52 m<sup>2</sup>  
 verdieping +2 = 55.75 m<sup>2</sup>

Totale Opp: 147.61 m<sup>2</sup>  
 gelijkvloers = 61.60 m<sup>2</sup>  
 verdieping +1 = 53.55 m<sup>2</sup>  
 verdieping +2 = 32.46 m<sup>2</sup>