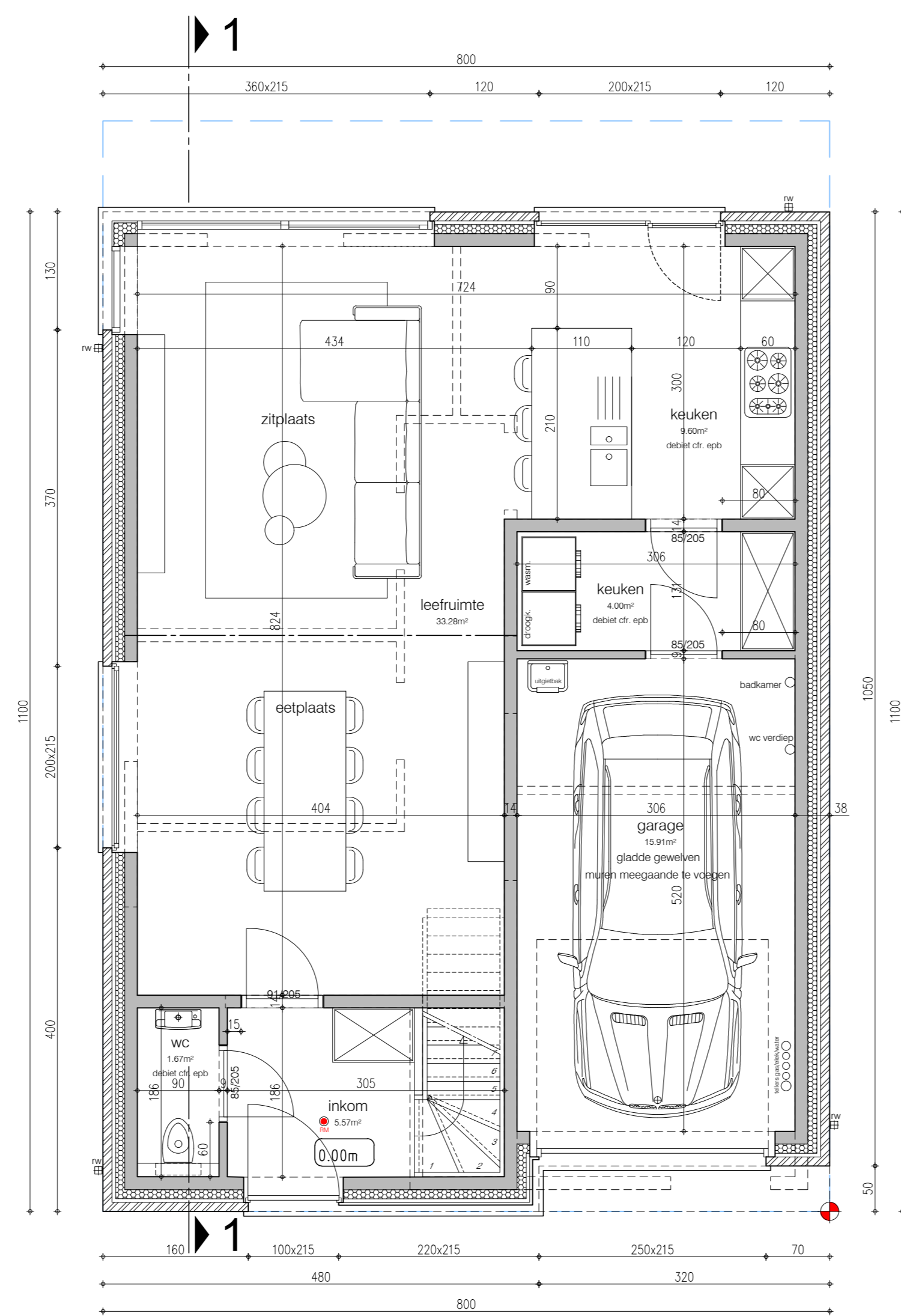
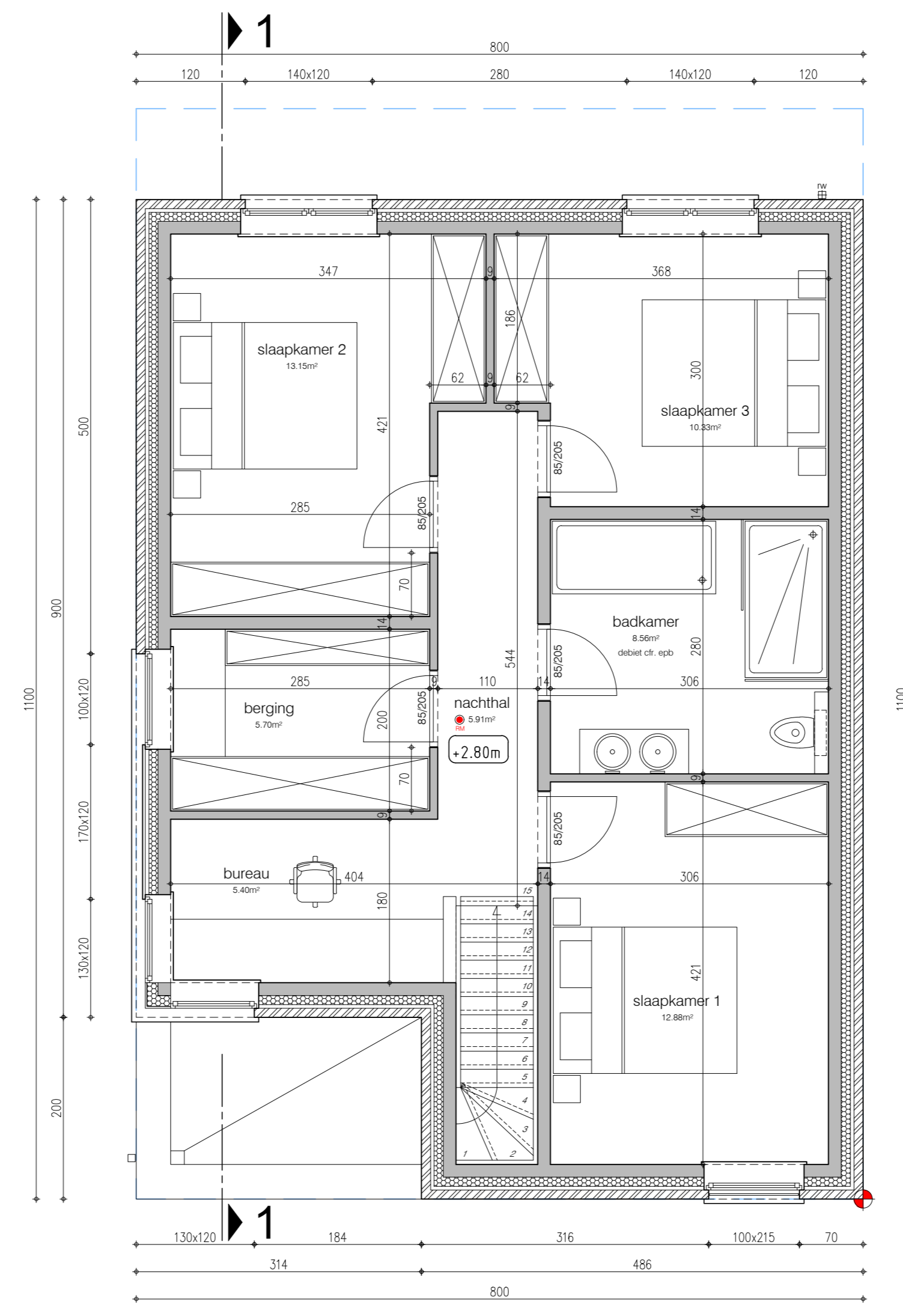


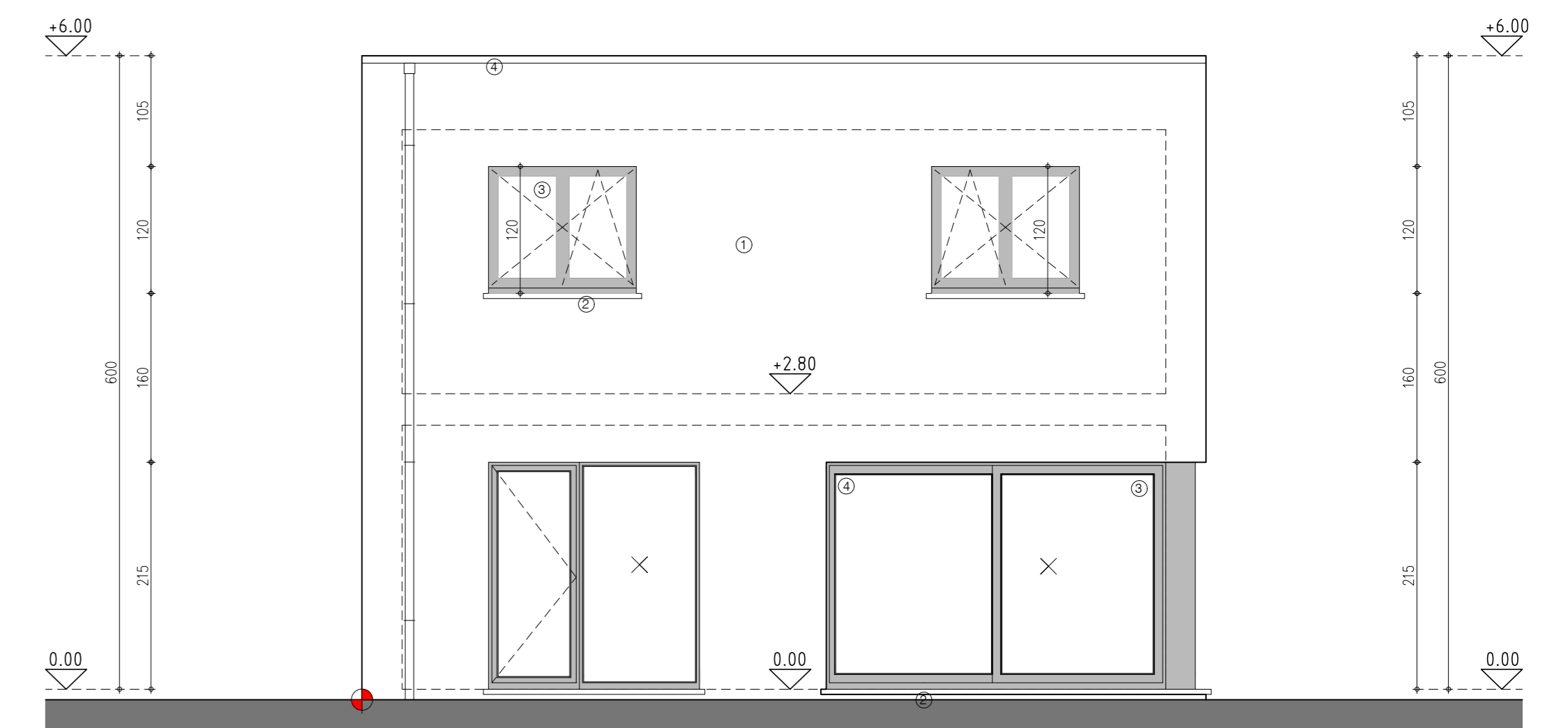
riolerings- en funderingsplan lot 74
86.37 m² bruto opp.



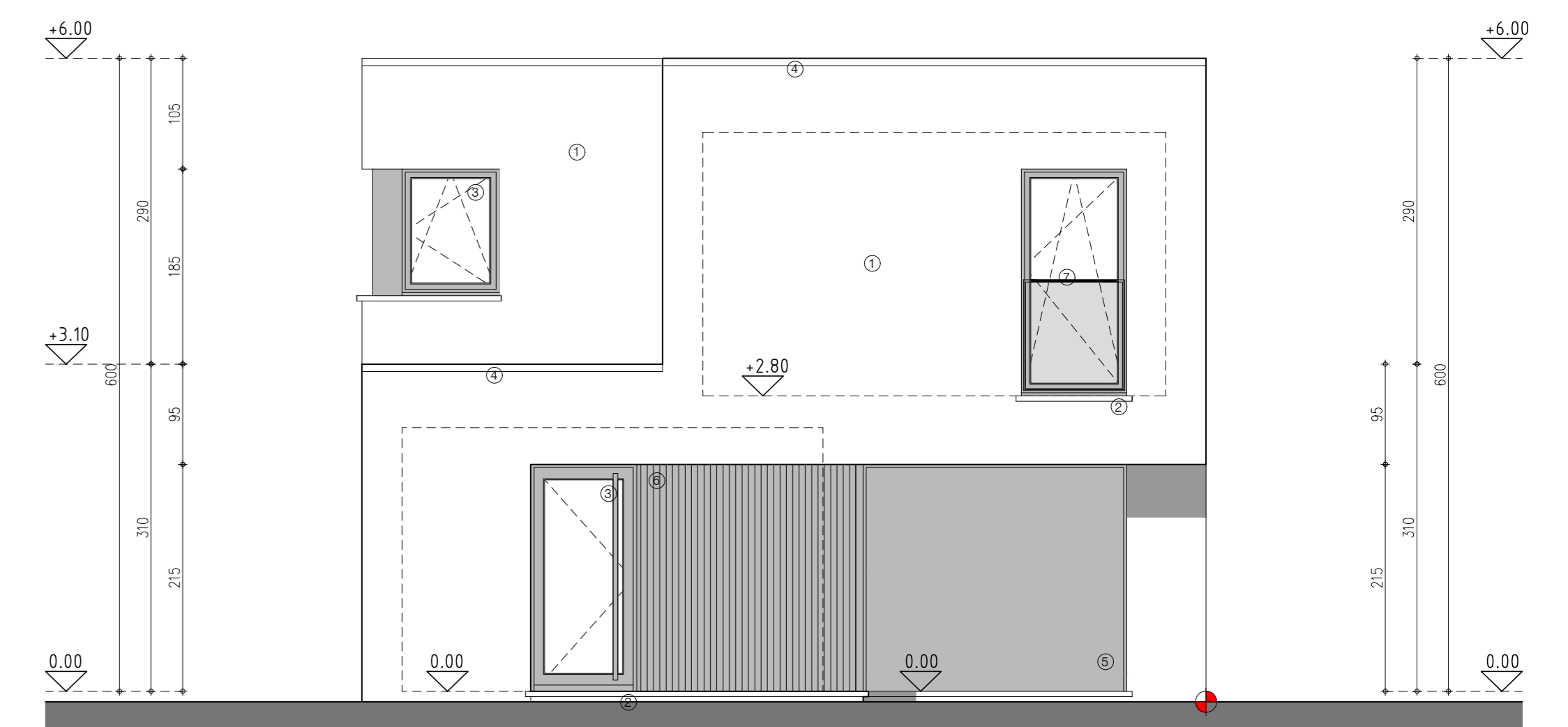
gelijkvloers lot 74
86.40 m² bruto opp.
72.53 m² netto opp.



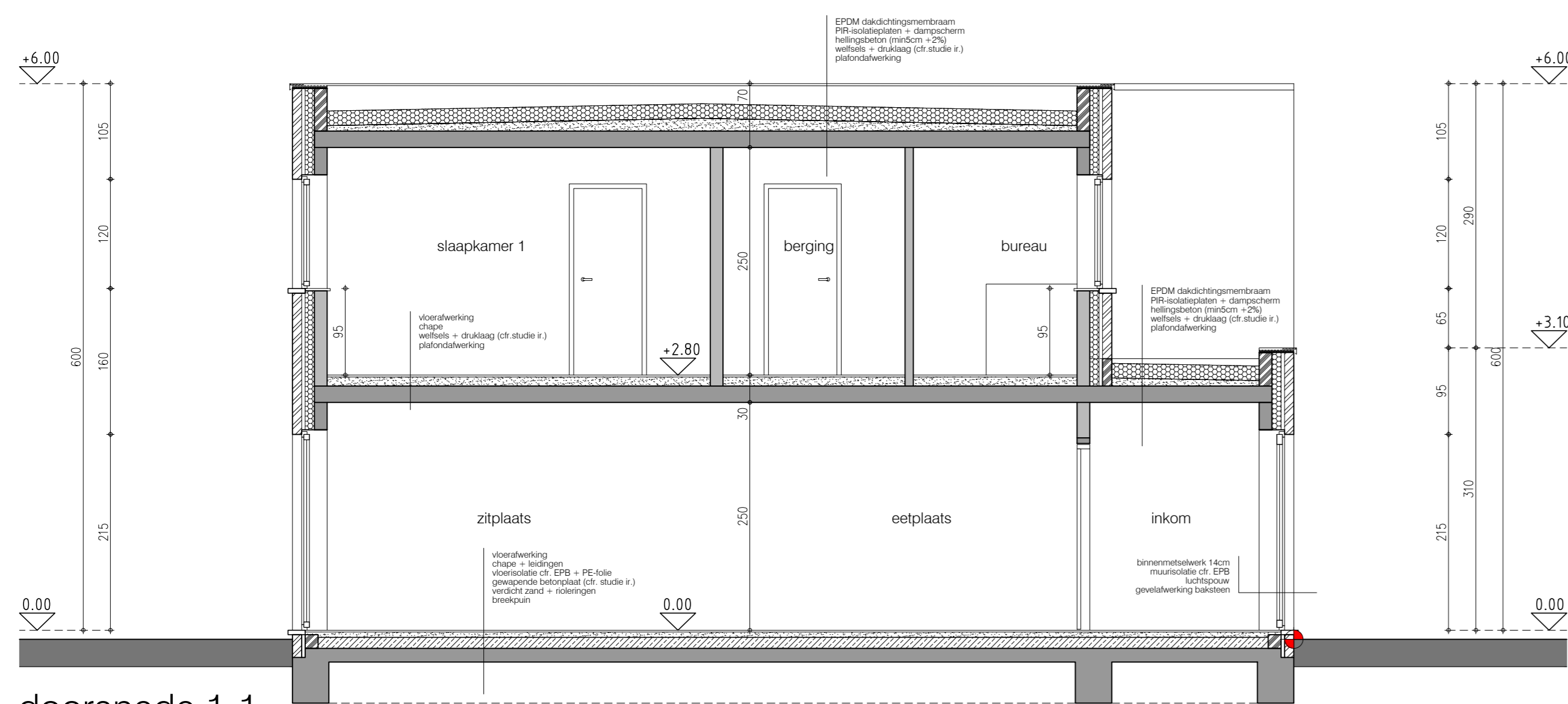
verdiepingsplan lot 74
81.72 m² bruto opp.
67.85 m² netto opp.



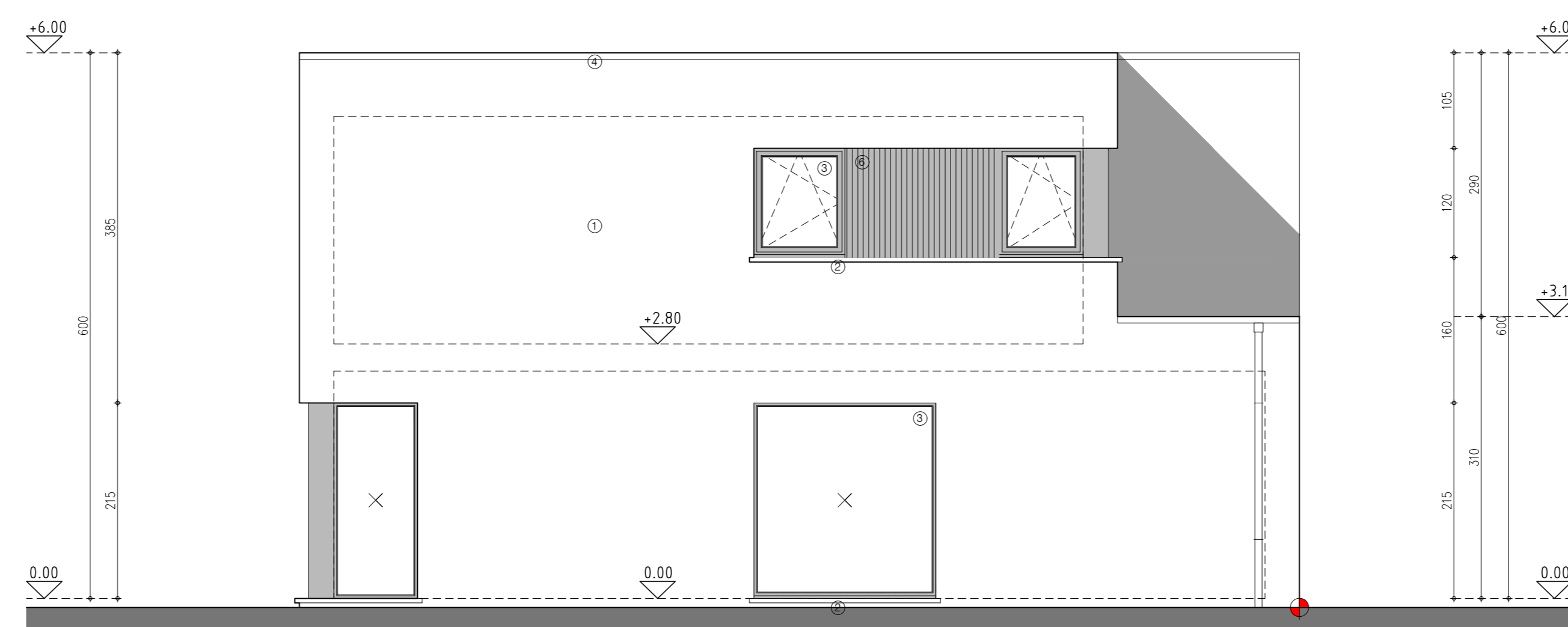
gevel noord - achtergevel lot 74



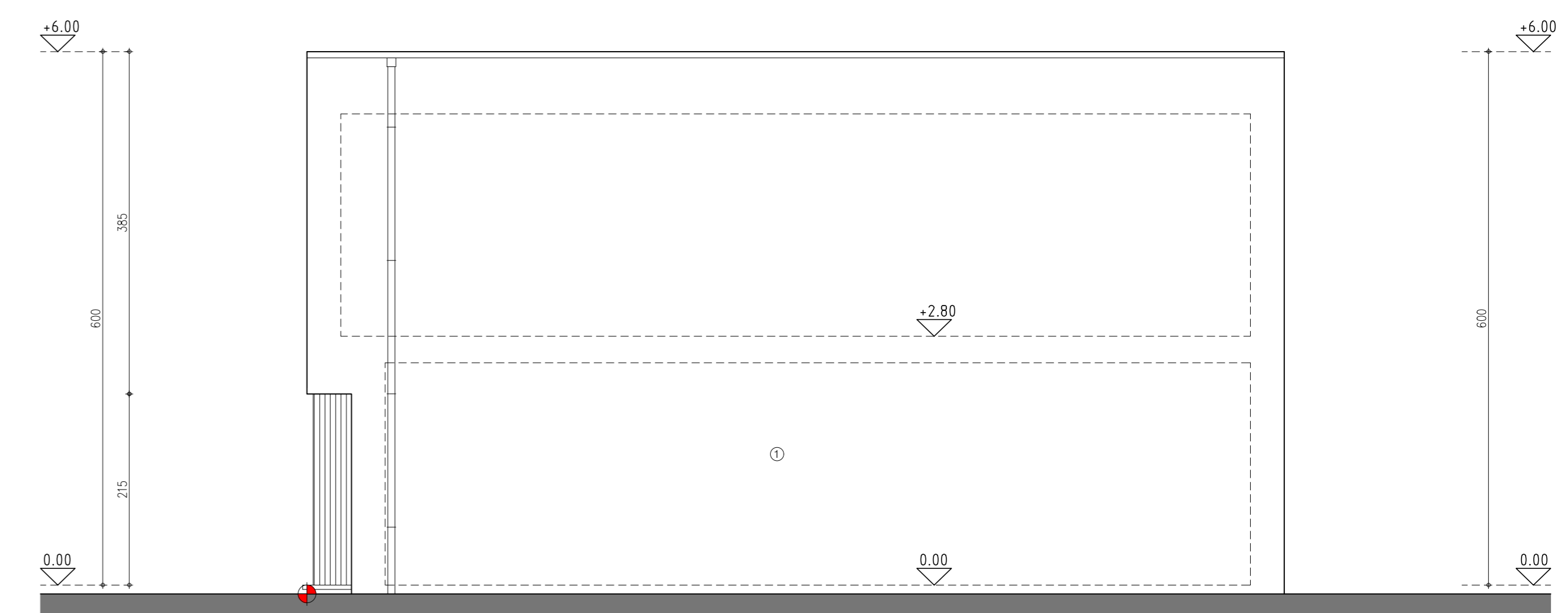
gevel zuid - voorgevel lot 74



doorsnede 1-1
lot 74



gevel west - linker zijgevel lot 74



gevel oost - rechter zijgevel lot 74